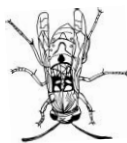


Name: _____ Class: _____

Carnivorous plants
gain nutrients by
eating animals.
Feed the wasp to
the *Sarracenia*
purpurea.

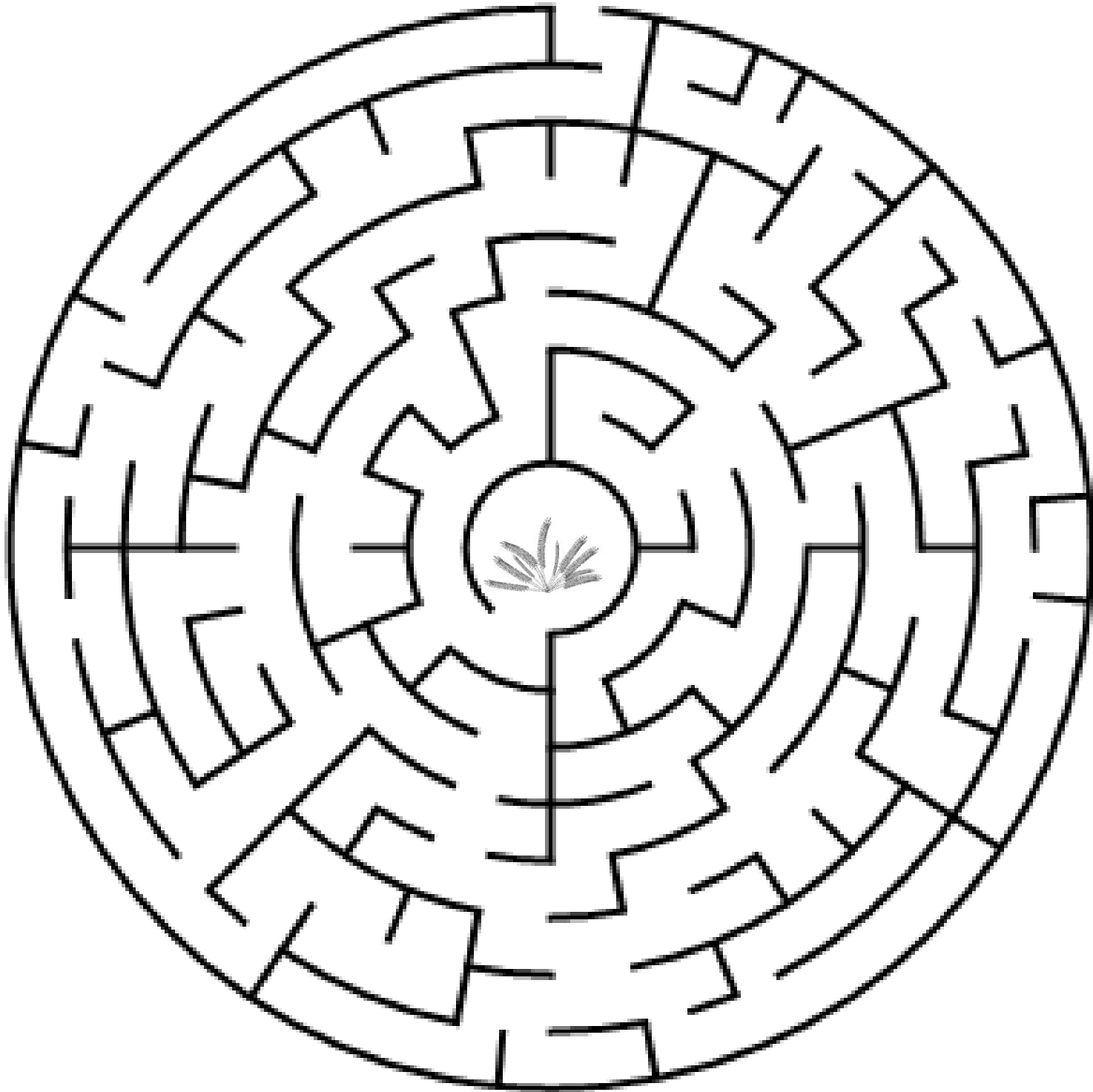


International Carnivorous Plant Society

Enjoying plants through cultivation ... working to conserve wild habitat for the future ... promoting research.

Name: _____ Class: _____

Carnivorous plants gain nutrients by eating animals. Feed the fruit fly to the sundew.



International Carnivorous Plant Society

Enjoying plants through cultivation ... working to conserve wild habitat for the future ... promoting research.

Name: _____ Class: _____

Carnivorous plants gain nutrients by eating animals. Feed the copepod to the bladderwort.

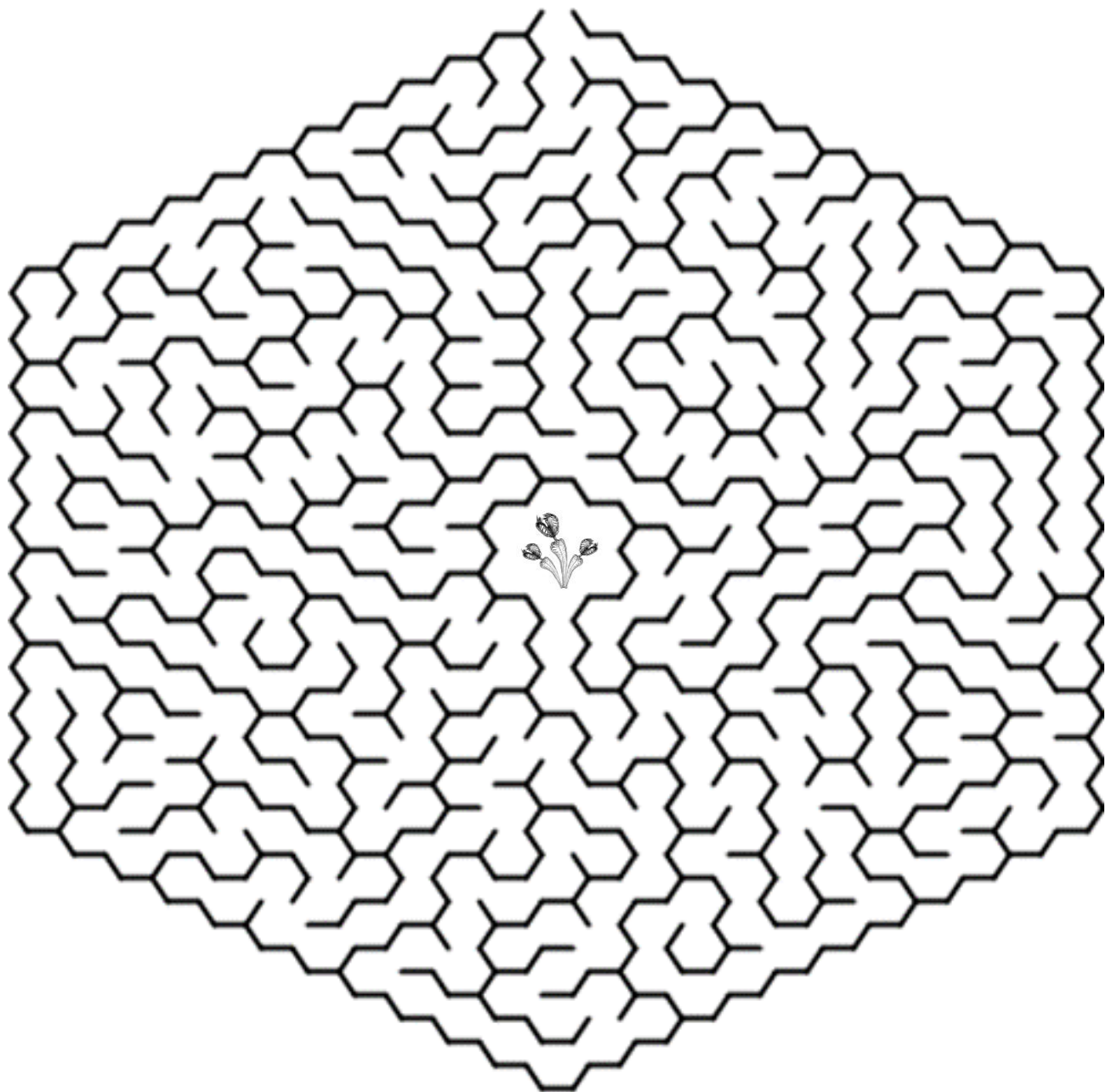


International Carnivorous Plant Society

Enjoying plants through cultivation ... working to conserve wild habitat for the future ... promoting research.

Name: _____ Class: _____

Carnivorous plants gain nutrients by eating animals. Feed the fly to the Venus flytrap.

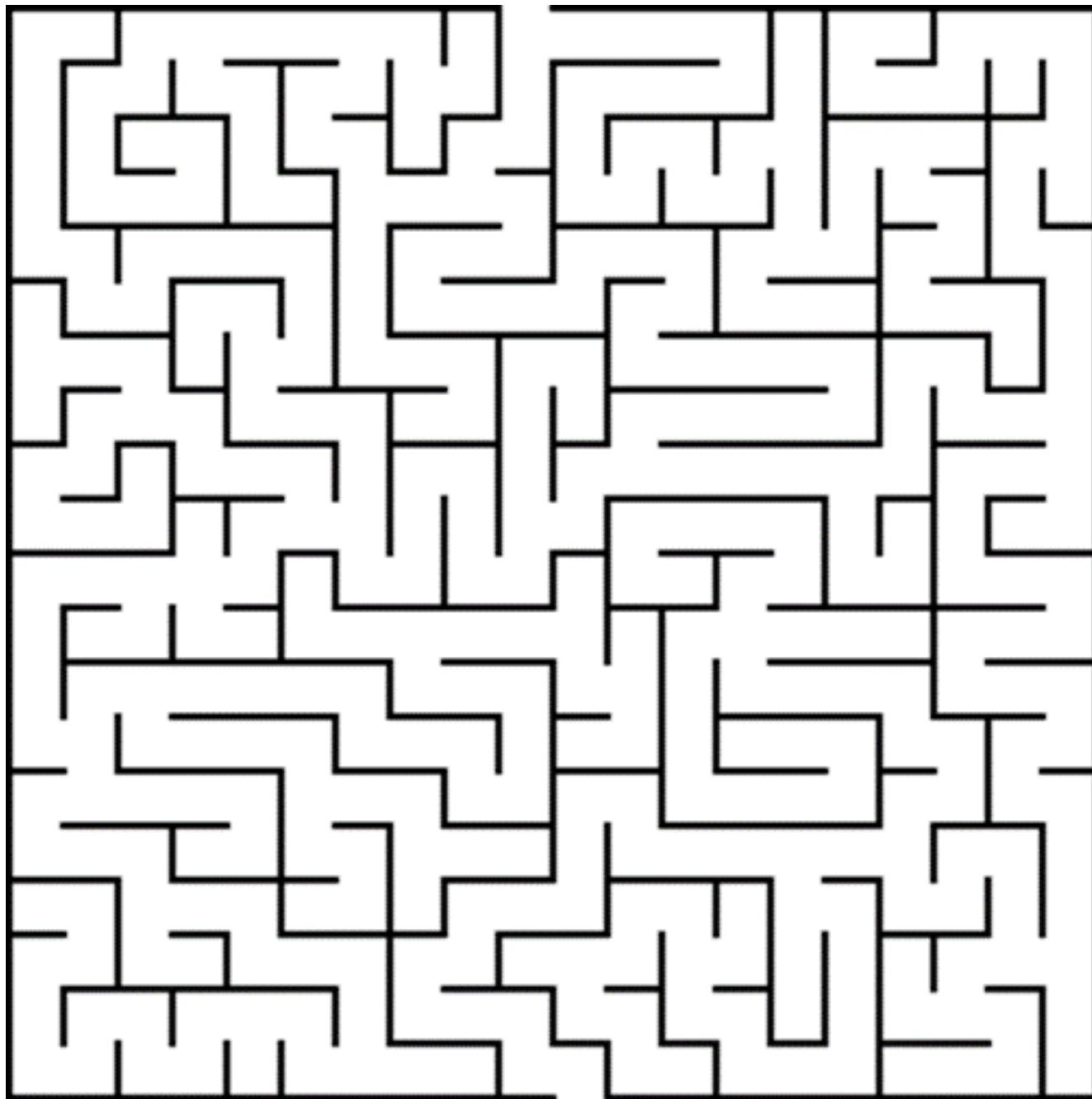


International Carnivorous Plant Society

Enjoying plants through cultivation ... working to conserve wild habitat for the future ... promoting research.

Name: _____ Class: _____

A species of ant live in the tendrils of Nepenthes pitcher plants. Help the ant find its way home.

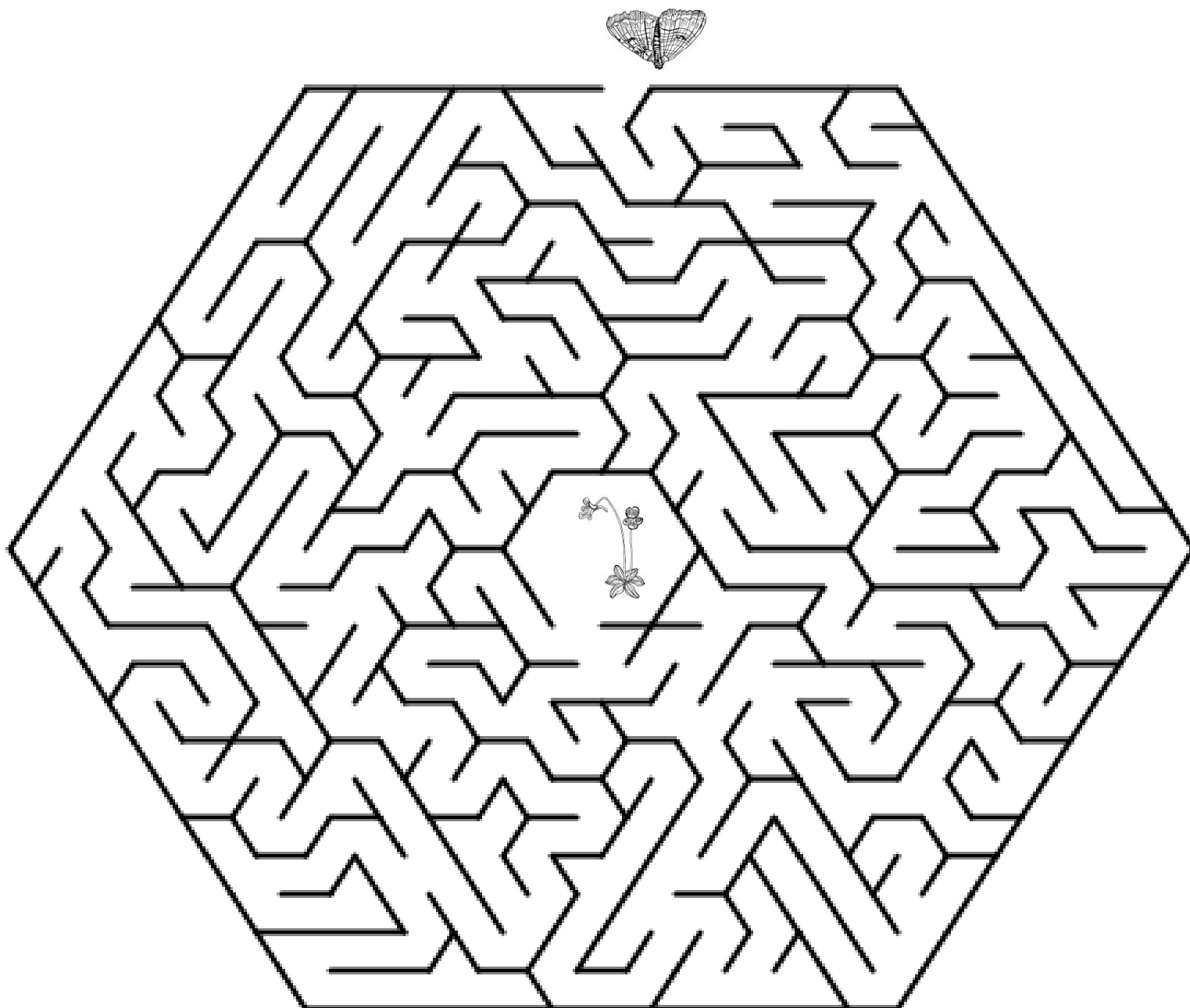


International Carnivorous Plant Society

Enjoying plants through cultivation ... working to conserve wild habitat for the future ... promoting research.

Name: _____ Class: _____

Carnivorous plants gain nutrients by eating animals. Feed the moth to the butterwort.



International Carnivorous Plant Society

Enjoying plants through cultivation ... working to conserve wild habitat for the future ... promoting research.