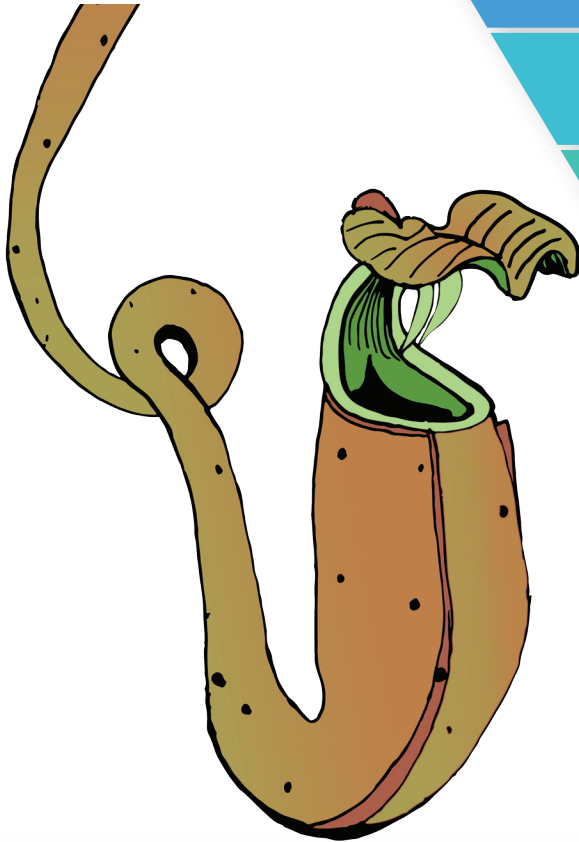


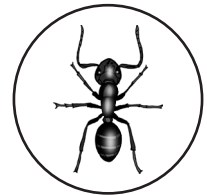
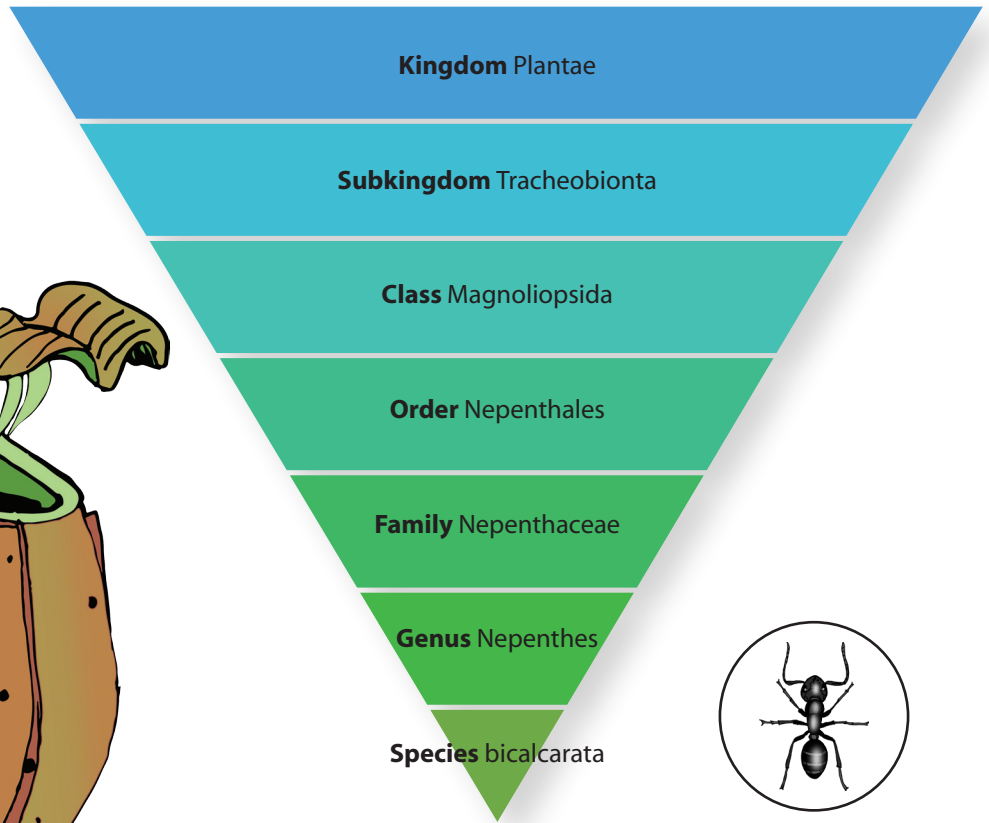
Nepenthes bicalcarata

Nicknames

Bical
Fanged pitcher-plant
Monkey cup



Nepenthes bicalcarata



Insects can be placed in pitchers as a snack.



Always keep moist.



Does not require a dormancy period.



Can be grown indoors, but does better in a warm greenhouse.



Borneo



Bright filtered light.



Pot in well-drained soil which can include a mix of peat, perlite, orchid bark, and sphagnum moss. Can also be grown in pure sphagnum moss.



Insects.

SYMBOL KEY

Nutrients

Water

Winter Dormancy

Indoors

Habitat Range

Light

Soil

Prey



carnivorousplants.org